

CTE TRACCESS 160

↑ 15,8 m

→ 7,5 m

👤👤 250 kg

Excellent
combination of
performances
and versatility.

Compactness.
Performances.
Technology.

CTE TRACCESS 160

15,8 m of working height, 7,5 m of outreach and the extraordinary capacity of 250 kg in the whole working area combined with CAN BUS system make this model a milestone in its category.



250 kg unrestricted working area



Winch with 230 Kg lifting capacity



Doorway access



Different power sources available

TECHNICAL DATA

- » Articulated boom (two elements) + telescopic boom (main boom + 1 extension) + jib
- » Sigma boom articulation
- » $\pm 180^\circ$ non continuous turret rotation
- » Smooth proportional simultaneous controls with acceleration and deceleration ramps
- » 2.4 GHz remote control with integrated display, home function, stabilization and start/stop
- » Quick release aluminum basket 1400x700x1100mm with wheels
- » 90° right + 90° left hydraulic basket rotation
- » Master/Slave basket leveling with electronic adjustment from remote controller
- » Engine start and stop controls from basket
- » All aluminium basket 1400x700x1100mm
- » Dual drive speed
- » Extending width track
- » CAN BUS electronic management system
- » 12V electric system
- » Load cell
- » N° 4 hydraulic outriggers with ground pressure sensors
- » Hour meter
- » 230V AC EC electrical socket in the basket
- » Standard boom colours blue (RAL 5017) or white (RAL 9003)
- » Gradeability approximately 25%
- » Drive speed max 1,5 Km /h
- » 230V 2,2 KW auxiliary engine
- » Rise and drive jib functionality
- » Automatic stabilization

ENGINES

- » Honda 11 Hp petrol engine
- » Lombardini diesel engine
- » 48V Lithium battery



watch the video

STRENX
PERFORMANCE STEEL

IPAF



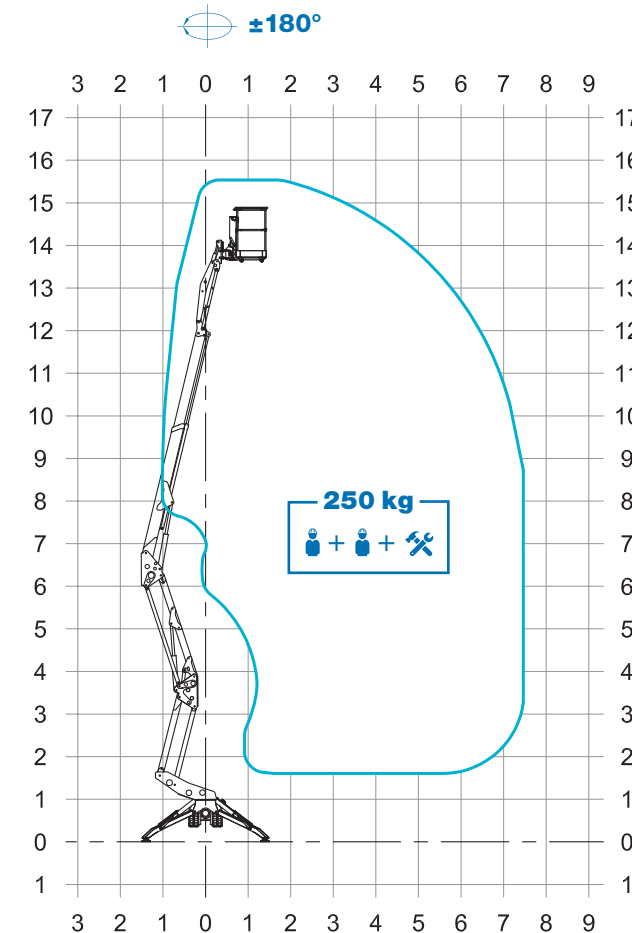
WHEELED,
EASY-REMOVABLE BASKET

GRAPHIC DISPLAY

WIRELESS REMOTE CONTROL

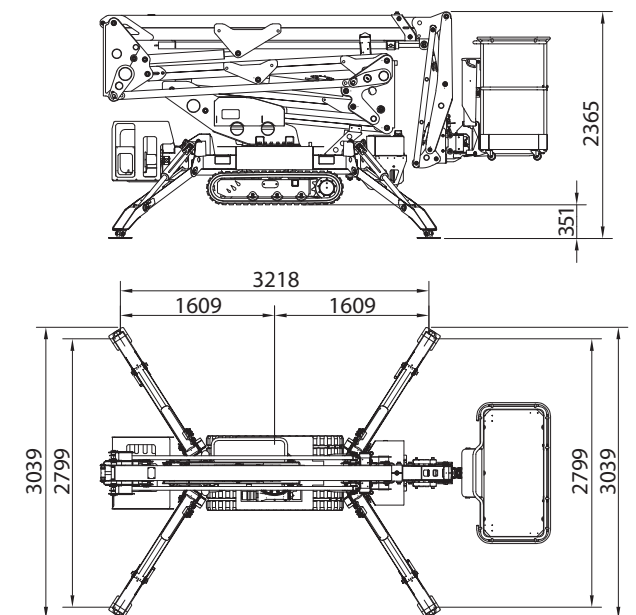
RISE AND DRIVE
JIB FUNCTIONALITY

WORKING ENVELOPE

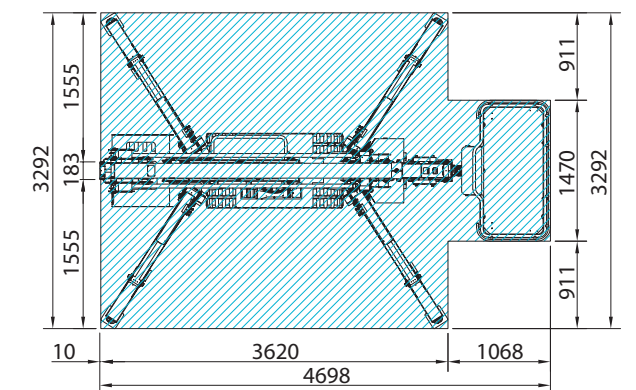


DIMENSIONS

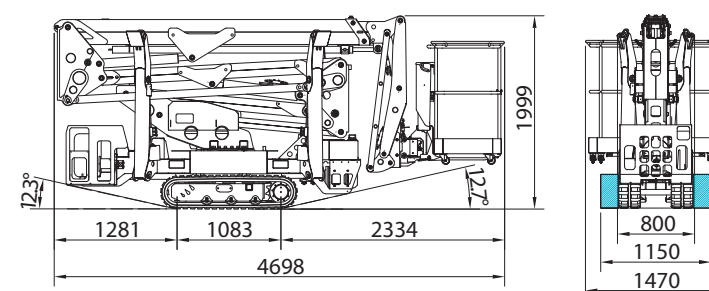
MIN



MAX



OUTRIGGER FOOTPRINT

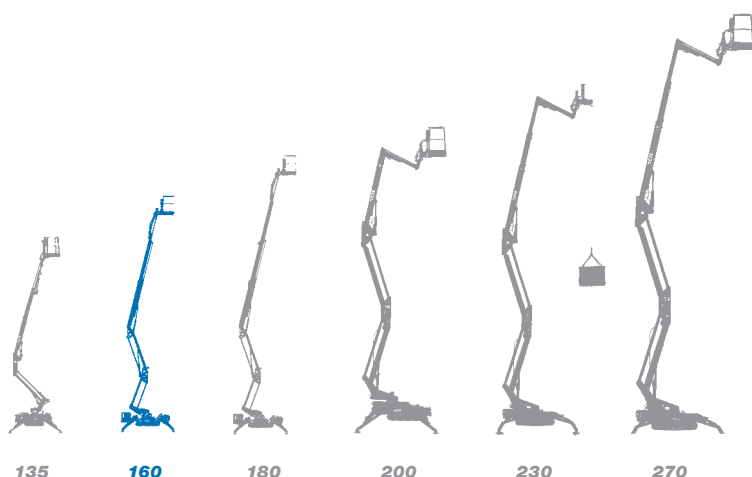


15,8* m	1,4 x 0,7 x 1,1 m
7,5* m	2.400 kg
250 kg	13,8* m

* outreach and height max values and repeatability can change within $\pm 3\%$ due to manufacturing variation and working condition.



Track-mounted range from 13 m to 27 m



- ★ Most versatile boom configuration
- ★ Most compact machines in class
- ★ Clean top boom
- ★ Friendly to use intuitive controls
- ★ Easy maintenance
- ★ Excellent boom rigidity during operation
- ★ Versatility of engines and versions



**We are CTE, one of the largest
european groups in the field of
lifting people and handling of material.**



**After sales
assistance**



**Service
spare parts**



**Scheduled
maintenance**



**On-site
assistance**



**Authorized
workshops**

Efficient services, innovative technical solutions, timely assistance, professional advice and training: 'Work Becomes Easy' is all this. A style, a philosophy at the heart of which are our customers, their safety, their quality of life. For this reason there is a group in CTE united by ideas, motivation and passion to simplify the work of companies active in the lifting of people and objects.



CTE s.p.a.
Via Caproni, 7
38068 Rovereto (TN)

Productive unit
Loc. Terramatta, 5
37010 Rivoli Veronese (VR)

Tel. +39 0464 48.50.50
info@ctelift.com
www.ctelift.com



UNI EN ISO 9001:2008 IT 61659